

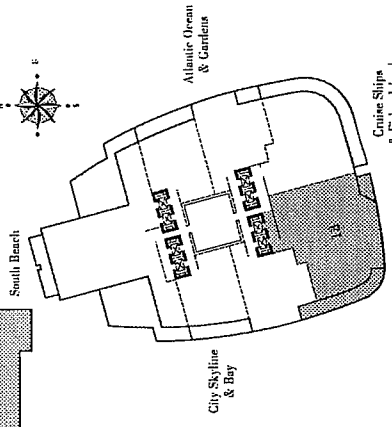
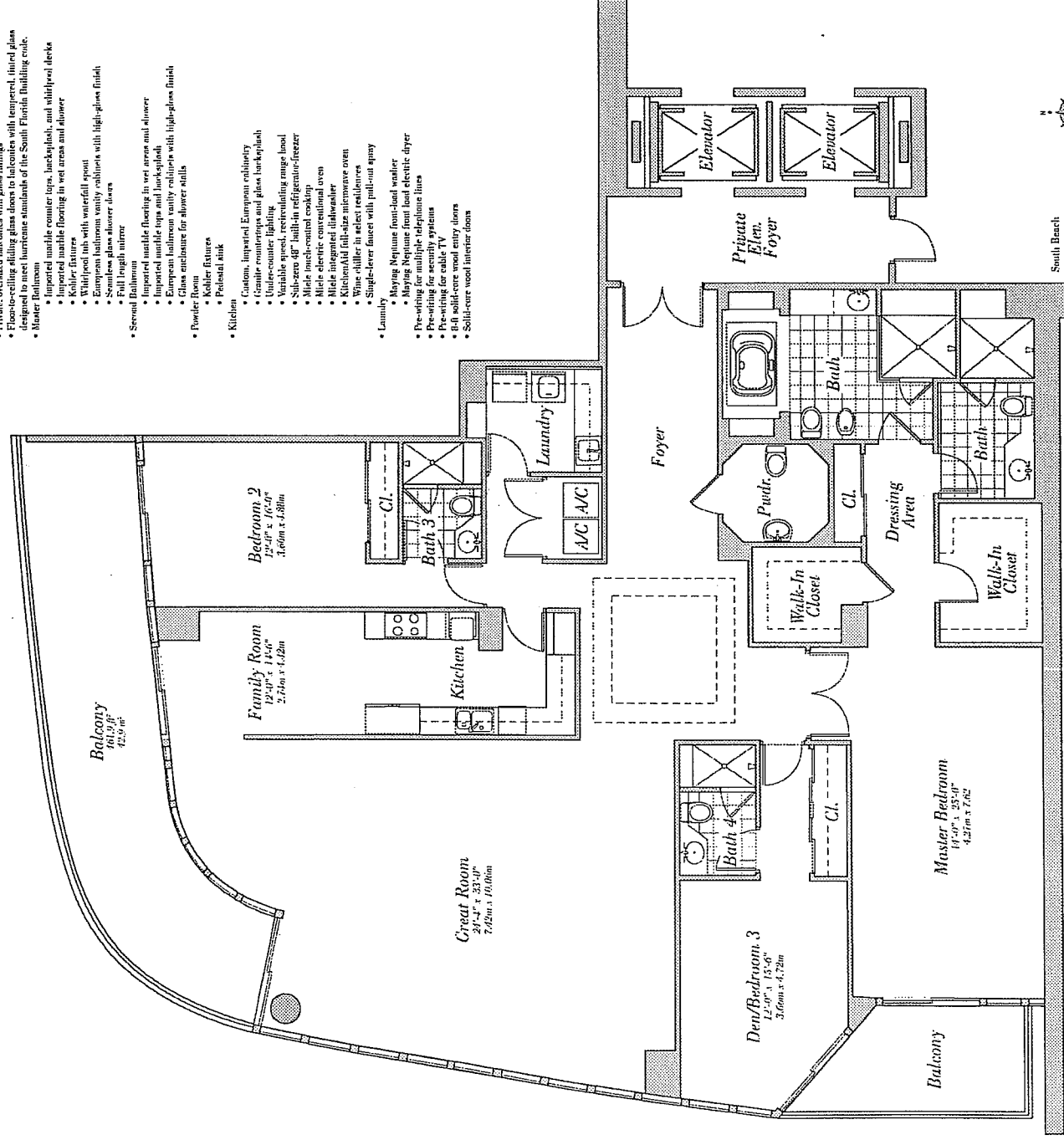
# Residence 13

Floors 30-35

3 Bedroom, 4 Bath, Powder Room  
3,335 s.f. 309.9 m<sup>2</sup>

## Residence Features:

- 10' ceilings
- Private, oriented balconies with glass railings
- Floor-to-ceiling sliding glass doors to balconies with tempered, tinted glass designed to meet hurricane standards of the South Florida Building code.
- Master bathroom
  - Impaired marble counter tops, backplash, and vitrolite decks
  - Impaired marble flooring in wet areas and shower
  - Kitchen
  - Walk-in tub with waterfall spout
  - European bathroom vanity cabinets with high-gloss finish
  - Full length mirror
- Second Bathroom
  - Impaired marble flooring in wet areas and shower
  - Impaired marble tops and backplash
  - European bathroom vanity cabinets with high-gloss finish
- Powder room
  - Glass enclosure for shower stalls
- Toilet fixtures
- Bathtub
- Kitchen
  - Custom, imported European cabinetry
  - Granite countertops and glass backplash
  - Under-counter lighting
  - Variable speed, recirculating range hood
  - Sub-zero 48" built-in refrigerator-freezer
  - Miele touch-control cooking
  - Miele electric convectional oven
  - Miele integrated dishwasher
  - KitchenAid full-size microwave oven
  - Wine-chiller in select residences
  - Single-lever faucet with pull-out spray
- Laundry
  - Heavy duty front-load washer
  - Heavy duty front-load electric dryer
  - Pre-wiring for multiple telephone lines
  - Pre-wiring for cable TV
  - Built solid-core wood entry doors
  - Solid-core wood interior doors



CONTINUUM  
ON SOUTH BEACH